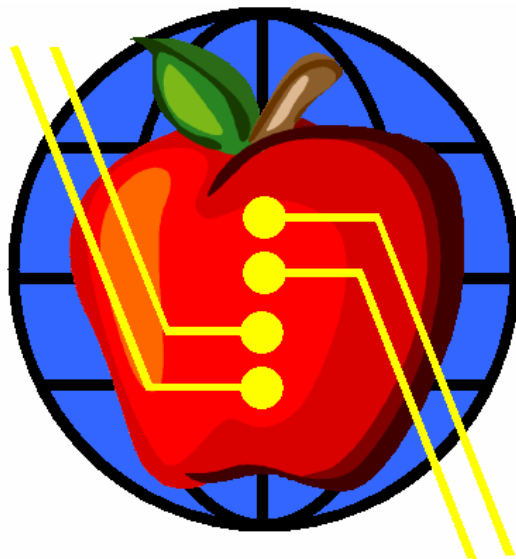


SAMPLE LESSON GUIDE



THE PENNSYLVANIA VIRTUAL SCHOOL NETWORK WEEKLY LESSON GUIDE

8th Grade Coursework
Week of January 23rd through January 27th, 2006

[Extralearning Access Info:](#)

Please contact PA Virtual's support line at:
(412) 244-0644
for access instructions

Social Studies

This week's lessons provide an overview of the Aztecs, the Maya, and the Spanish Conquistadors.

Objectives:

After completing this lesson, students will be able to:

- Describe who the Aztecs were and where they built their empire
- List some of the cultural influences and religious practices of the Aztec people that made them unique
- Describe who the Maya were and where they built their empire
- List some of the cultural influences and religious practices of the Maya that made them unique
- Describe the impact that Spanish colonization had upon the Aztec and the Mayan people and their cultures
- Explain the motives for conquest and methods used by the Spanish Conquistadors

State Standards Addressed

8.4.6 Identify and explain how individuals and groups made significant political and cultural contributions to world history- Americas (e.g., Pizarro, Atahualpa, Aztecs, Incas, Montezuma, Cortez)

Learning Activities

- Review pages 121 through 135 in *History of the World* – Textbook
- Complete interactive learning objects presented on course site
- End of week assessment administered by learning coach/facilitator

Weekly Assessment Period

2:00 – 2:30 on Thursday afternoon

Math

This week's lessons provide an overview of triangle types and the relationships among angles in triangles.

Objectives:

After completing this lesson, students will be able to:

- Provide a working definition for triangles that includes their distinguishing characteristics
- Identify the types of triangles that are categorized by the size of their angles - right, acute, and obtuse
- Identify the types of triangles that are categorized by their length of their sides - scalene, equilateral, and isosceles
- Utilize proportions and indirect measurement in similar triangles to solve for X
- Describe the following algebraic properties - the reflexive property, the substitution property, the transitive property

State Standards Addressed

2.9.8 Draw, label, measure and list the properties of complementary, supplementary and vertical angles, and - Identify, name, draw and list all properties of triangles
2.10.8 Solve problems requiring indirect measurement for lengths of sides of triangles.

Learning Activities

- Review pages 258 through 285 in *Math for Everyday Living* – Textbook
- Complete interactive learning objects presented on course site
- End of week assessment administered by learning coach/facilitator

Weekly Assessment Period

2:30 – 3:00 on Thursday afternoon

Science

This week's lessons explore the atomic model and provide an introduction to the periodic table.

Objectives:

After completing this lesson, students will be able to:

- Identify the key components in an atom (the nucleus, neutrons, protons, and electrons)
- Explain the scientists involved in the discovery and formation of the atomic model
- Describe the purpose of the periodic table of elements
- Identify the information presented in the periodic table for each element listed

State Standards Addressed

3.4.7 Describe concepts about the structure and properties of matter. Identify elements as basic building blocks of matter that cannot be broken down chemically.

3.4.10 Explain concepts about the structure and properties of matter - know that atoms are composed of even smaller sub-atomic structures whose properties are measurable.

Learning Activities

- Review pages 97 through 115 in *The Science of Things* – Textbook
- Complete interactive learning objects presented on course site
- End of week assessment administered by learning coach/facilitator

Weekly Assessment Period

1:30 – 2:00 on Friday afternoon

Language Arts

This week's lessons address Herman Melville's classic *Moby Dick*.

Objectives:

After completing this lesson, students will be able to:

- Provide a general description of the novel *Moby Dick* in terms of symbolism used
- Explain how Melville uses the story in *Moby Dick* to portray the conflict between God and man, and man and Nature
- Provide an historical context for the period when Melville wrote *Moby Dick* and describe how contemporary issues affected the themes presented in the book

State Standards Addressed

1.3.8 Read and understand works of literature

Learning Activities

- Continue reading *Moby Dick* – pages 50-80
- Complete interactive learning objects presented on course site
- End of week assessment administered by learning coach/facilitator

Weekly Assessment Period

2:00 – 2:30 on Friday afternoon

Work Readiness/Life Skills

This week's lessons address emotional intelligence and conflict resolution in the workplace.

Objectives:

After completing this lesson, students will be able to:

- Provide a practical definition for emotional intelligence
- Describe some common situations where conflict arises in the workplace due to a lack of understanding and/or emotional intelligence
- Explain some commonly used techniques that can be used to diffuse conflict in the workplace

State Standards Addressed

Not Yet Available

Learning Activities

- Complete interactive learning objects presented on the course site
- Write a one page paper on emotional intelligence and why it is so important in a productive working environment

Weekly Assessment Period

2:30 – 3:00 on Friday afternoon

Technical Requirements

Browser Compatibility

The *Extralearning Online* learning management system is designed to support MS Internet Explorer. It will not work properly if you use other browsers like Netscape's Navigator or Mozilla's Firefox.

Minimum System Requirements:

- Pentium III (400 MHz or higher)
- High-speed broadband Internet connection
- Windows 2000, 98 SE, XP Home or Professional
(Not recommended for Windows ME, Apple Macintosh, or Linux based systems at this time)
- SoundBlaster compatible sound card
- 128 MB RAM or better
- XVGA (display setting 1024x768 resolution)
- Internet Explorer (web browsing software) - version 6.0 or higher
- Audio: SoundBlaster compatible sound card with speakers
- Browser Plug-Ins: Windows Media Player 10; Acrobat Reader 6.0 or higher; Flash Player; Shockwave Player; Quicktime Player

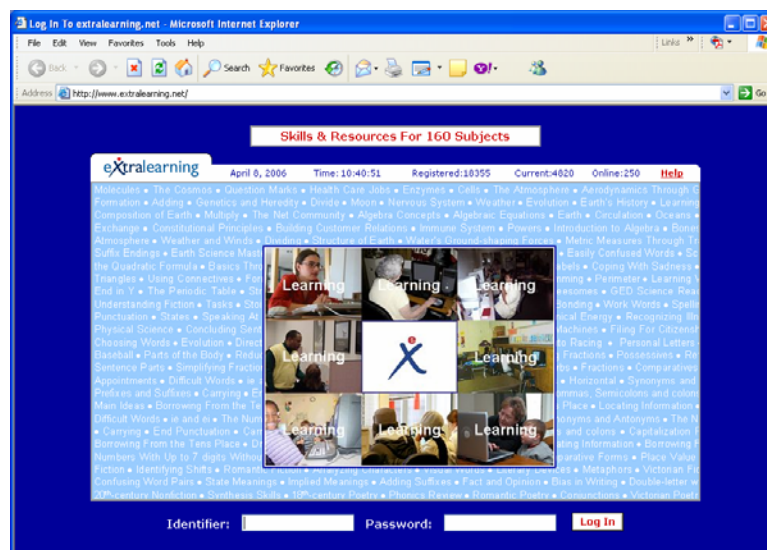
Accessing Lessons on Extralearning Online

Logging On

On this screen, type:

In the identifier field -----> type the id # provided by the PA Virtual support representative

In the Password field -----> type the password provided by the PA Virtual support representative



NOTE: You only have to logon once!!!! If you encounter more than one login panel, you probably have to adjust your permissions (see Adjusting Permissions section of this document).

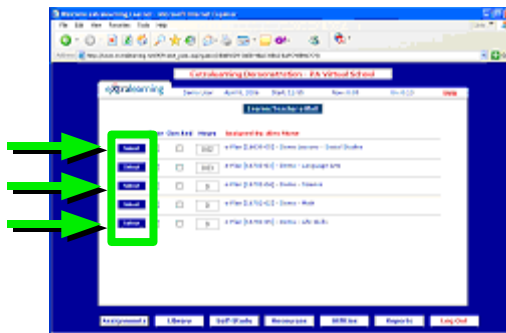
Viewing Lessons and Navigating *Extralearning Online*

Feel free to explore the Extralearning library and support features, but to view customized lessons...

1. Click the Assignments button



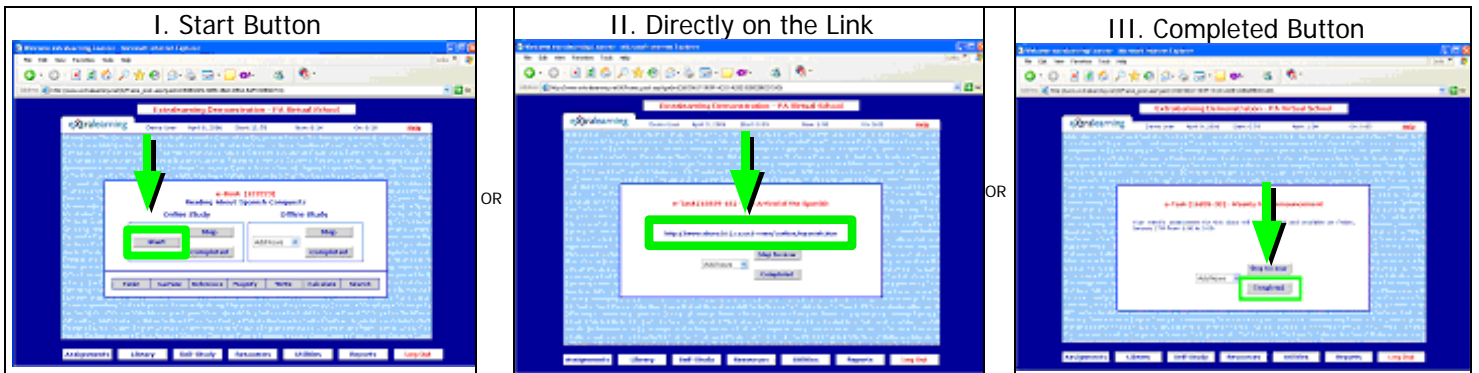
2. Click a Select button next to any of the subject areas



3. Click the Select button next to each Plan Component

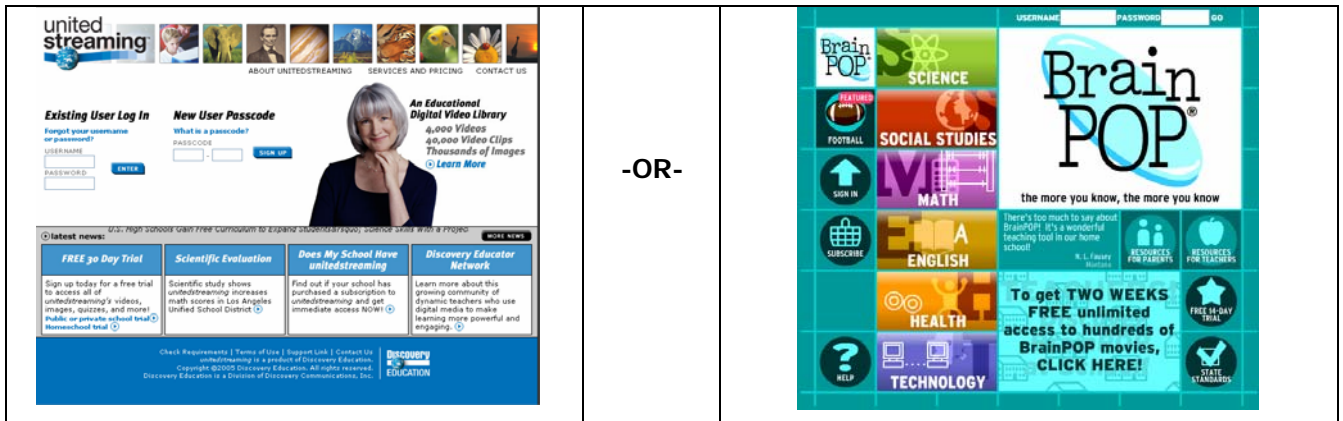


4. On the next frame, click the Start button, directly on the link shown, or just read the text and click Completed.

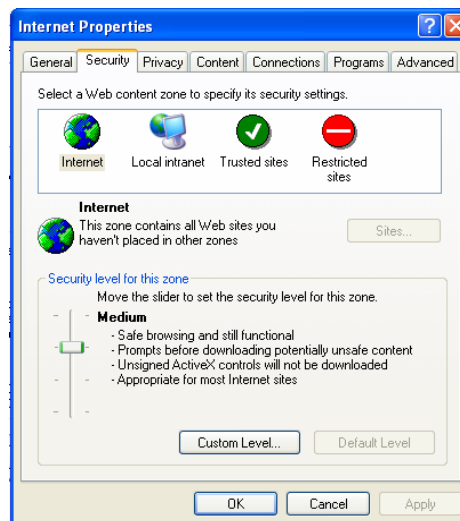


Adjusting Permissions

If you encounter the following frames, you will need to turn off your pop-up blocker and/or change your computer's trusted sites list.



If you are having problems, it probably means that you are behind a firewall or your security setting is set too high to allow Extralearning to pass login information to these other sites. To allow Extralearning to pass login information, you can access the Control Panel ---> Windows Security Center ---> Internet Options panel shown below:



Once you have accessed this panel you can either add these sites to your trusted list:

- www.extralearning.net
- www.unitedstreaming.com
- www.brainpop.com
- <http://www.atomiclearning.com/>

... or you can set your security level to a lower setting so *Extralearning Online* can pass your login information to these other sites. THIS IS THE EASIEST AND QUICKEST SOLUTION.

Follow the same procedures to ensure that any 3rd party security/firewall application (like Norton or McAfee) "trusts" these sites.